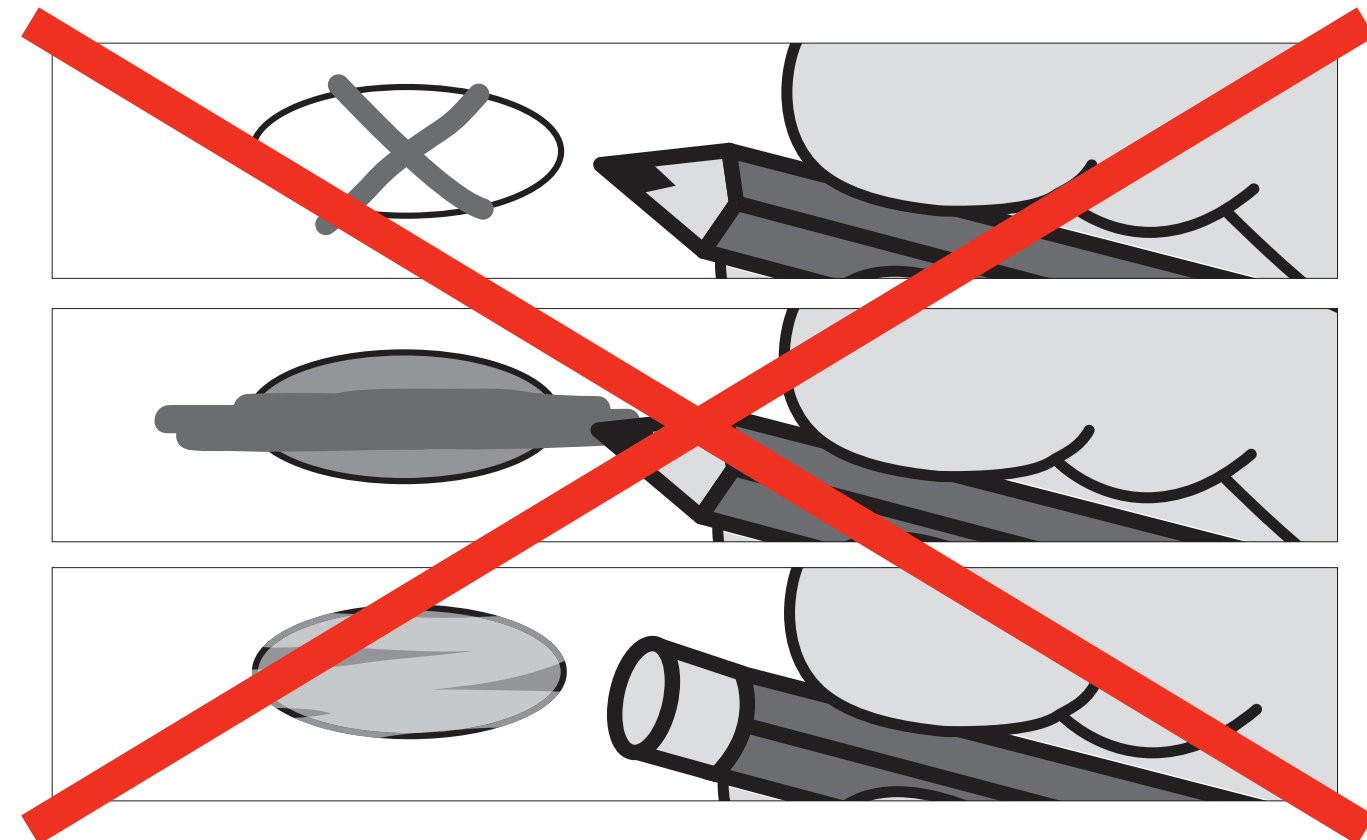
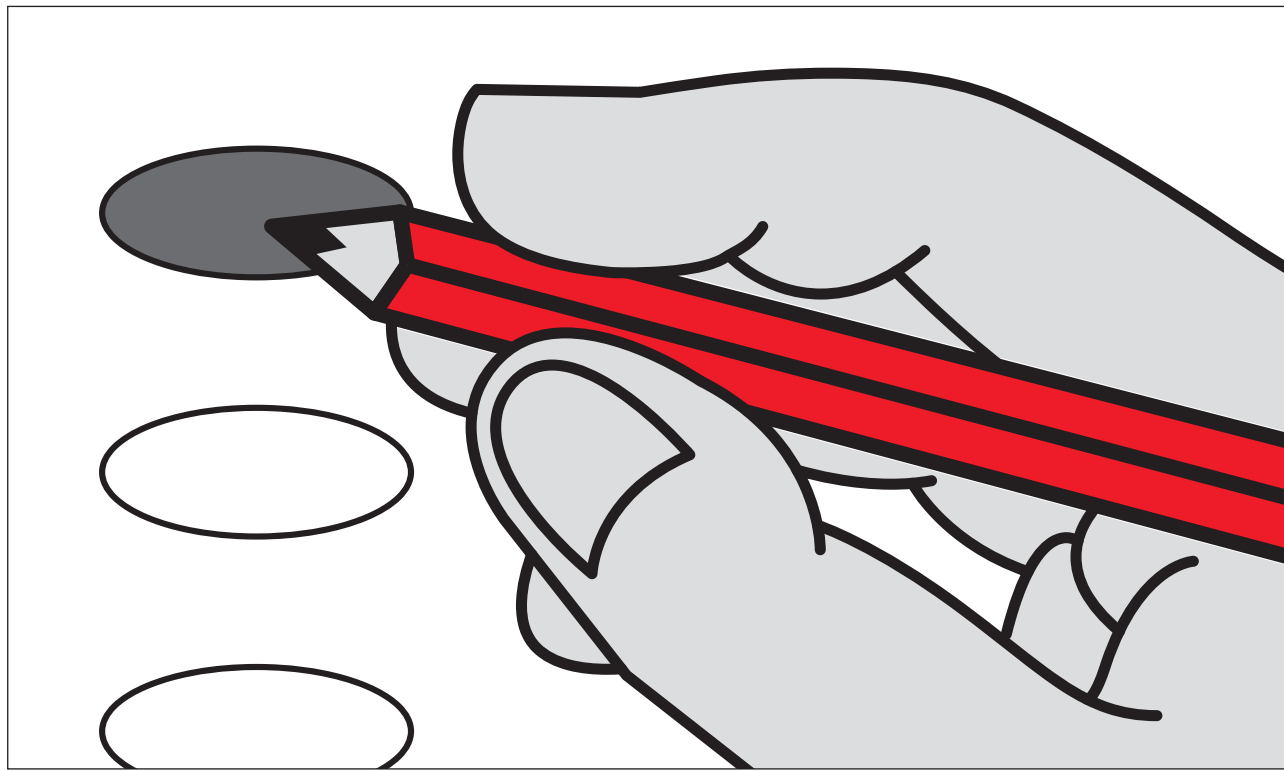


Voting instructions



1 Record your vote

Fill in the oval completely using the pen or pencil provided.
Do not use an X or ✓.

2 Review your ballot

Before you place your ballot into the ballot box or scanner, double-check your votes.

Some races allow votes for more than one person; the number appears just below the name of the office. Make sure you do not mark more votes than that number. You may choose to vote for fewer, or you can skip any race.

If a ballot contains too many votes in one race, votes for that race will not be counted. The other correct races will be counted.

! If you make a mistake:

If you make a mistake, do not cross out or erase.

Write "VOID" across the ballot and ask your poll worker for a new ballot.